



CATALOG

FEBRUARY 2024

HANDMADE BY TRIBAL
WOMEN, FOR OUR
BRANDS:



&



CONTENTS/ 2024

HOME ACCESSORIES

PAINTINGS	4
RUGS	5
TORANS & BUNTINGS	6
CUSHION COVERS	7

TABLEWARE

RUNNERS	8
COASTERS & TRAYS	9
TISSUE BOXES	11

YOUR ACCESSORIES

BAGS & POUCHES	12
BOOKS	14

APPAREL

BABY QUILTS & STOLES	15
-------------------------	----

SIKKI GRASS

GRASS WEAVE	16
-------------	----

NEW ARRIVAL

Our contemporary Warli collection was an initiative conceptualised entirely by the artisans who were subconsciously brainstorming ways to bring their skills to the metropolitan city of Mumbai

We believe they've quite accurately managed to depict the chaos and the beauty that is Mumbai through their perspective and tools.



LAPTOP BAG

Internal padding.

MATERIAL TYPE: CANVAS

STYLE: SCREENPRINT

SIZES & PRICING
15" x 10.5" INR 900.



TOTE BAG

MATERIAL TYPE: CANVAS

STYLE: SCREENPRINT

SIZES & PRICING
15" x 16" INR 300



LAPTOP SLEEVE

Internal padding.

MATERIAL TYPE: CANVAS

STYLE: SCREENPRINT

SIZES & PRICING
15" x 10.5" INR 800

HOME ACCESSORIES

PAINTINGS



WALL HANGING

White hand painting on brick red paper.

MATERIAL TYPE: PAPER

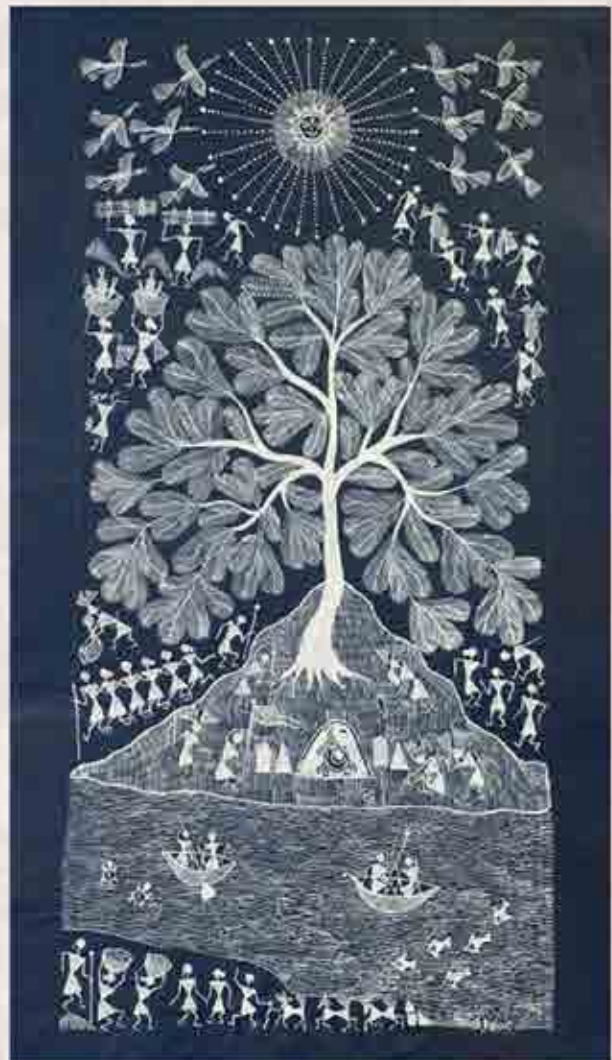
STYLE: WARLI

SIZES & PRICING

INR 450 per meter (custom sizing)

CUSTOMIZATIONS

FOR QUOTATIONS ON CUSTOM SIZING, BASE MATERIAL AND BULK ORDERS KINDLY CONTACT US WITH YOUR SPECIFIC REQUIREMENTS.



WALL HANGING

White hand painting on naturally dyed canvas.

MATERIAL TYPE: CANVAS

STYLE: WARLI

SIZES & PRICING

INR 450 per square foot (custom sizing)

CONTACT US

INFO@RAAHFOUNDATION.ORG

+919320019185

+919869423122

HOME ACCESSORIES

RUGS



RUG

100% sustainably sourced material. Material that would otherwise find itself in a landfill.

MATERIAL TYPE: TEXTILE WASTE

STYLE: HAND WOVEN

SIZES & PRICING

72" x 24" INR 1,500

24" x 24" INR 500

(custom sizing available)

COLOURS AND PATTERNS WILL VARY ACCORDING TO MATERIAL AVAILABILITY. **WE GIVE OUR ARTISANS THE FREEDOM OF CREATIVITY TO SHOWCASE THEIR AESTHETIC.** IF YOU HAVE ANY SPECIFIC REQUIREMENTS KINDLY CONTACT US.

CONTACT US

INFO@RAAHFOUNDATION.ORG

+919320019195

+919869423122



SUPPORT US

[HTTPS://WWW.RAAHFOUNDATION.ORG/PAYMENT.PHP](https://www.raahfoundation.org/payment.php)



HOME ACCESSORIES

TORANS & BUNTINGS



LATKANS

MATERIAL TYPE: BROCADE, POLKA DOT, KHUNN, RAW SILK, HAND PAINTED, COTTON

STYLE: HAND MADE

SIZES & PRICING

36" x 7.5" INR 400
(custom sizing available)

TORANS

MATERIAL TYPE: BROCADE, POLKA DOT, KHUNN, RAW SILK, HAND PAINTED

STYLE: HAND MADE

SIZES & PRICING

36" x 7.5" INR 400 - 700
(custom sizing available)

COLOURS AND PATTERNS WILL VARY ACCORDING TO MATERIAL AVAILABILITY. WE GIVE OUR ARTISANS THE FREEDOM OF CREATIVITY TO SHOWCASE THEIR AESTHETIC. IF YOU HAVE ANY SPECIFIC REQUIREMENTS KINDLY CONTACT US.

CONTACT US

INFO@RAAHFOUNDATION.ORG

+919320019195

+919869423122



BUNTINGS

100% sustainably sourced material

MATERIAL TYPE: COTTON (CAN BE CUSTOMISED, NAME OR OCCASION)

STYLE: HAND MADE

SIZES & PRICING

36" x 7.5" INR 300
(custom sizing available)

HOME ACCESSORIES

CUSHION COVERS



COVERS

100% sustainably sourced material

MATERIAL TYPE: COTTON & KHUN

STYLE: PATCHWORK & PRINT ON KHUN

SIZES & PRICING

20" x 20" set of 3 INR 600

COLOURS AND PATTERNS WILL VARY
ACCORDING TO MATERIAL AVAILABILITY. **WE
GIVE OUR ARTISANS THE FREEDOM OF
CREATIVITY TO SHOWCASE THEIR AESTHETIC.** IF
YOU HAVE ANY SPECIFIC REQUIREMENTS KINDLY
CONTACT US.

CONTACT US

INFO@RAAHFOUNDATION.ORG

+919320019195

+919869423122

T A B L E W A R E

RUNNERS

RUNNERS

100% sustainably sourced material

MATERIAL TYPE: TEXTILE WASTE, COTTON

STYLE: PATCHWORK & WARLI PAINTINGS

SIZES & PRICING

13" x 60" INR 1000 - 1,500



CUSTOMIZATIONS

COLOURS AND PATTERNS WILL VARY ACCORDING TO MATERIAL AVAILABILITY. WE GIVE OUR ARTISANS THE FREEDOM OF CREATIVITY TO SHOWCASE THEIR AESTHETIC. IF YOU HAVE ANY SPECIFIC REQUIREMENTS KINDLY CONTACT US.

CONTACT US

INFO@RAAHFOUNDATION.ORG

+919320019185

+919869423122



TABLEWARE



TRAYS

GLASS LAMINATION

MATERIAL TYPE: TEXTILE WASTE, COTTON & SILK

STYLE: PATCHWORK & WARLI PAINTINGS, HAND DYED

SIZES & PRICING

9" x 7" INR 600

10" x 10" INR 800

CUSTOMIZATIONS

COLOURS AND PATTERNS WILL VARY

ACCORDING TO MATERIAL AVAILABILITY. **WE**

GIVE OUR ARTISANS THE FREEDOM OF

CREATIVITY TO SHOWCASE THEIR AESTHETIC. IF

YOU HAVE ANY SPECIFIC REQUIREMENTS KINDLY

CONTACT US.

CONTACT US

INFO@RAAHFOUNDATION.ORG

+919320019195

+919869423122

TABLEWARE



COASTERS

Glass lamination

MATERIAL TYPE: COTTON & JUTE

STYLE: WARLI PAINTING, HAND DYED

SIZES & PRICING

4" x 4" set of 6 INR 400

4" X 4" Set of 4 INR 400

COLOURS AND PATTERNS WILL VARY
ACCORDING TO MATERIAL AVAILABILITY. **WE
GIVE OUR ARTISANS THE FREEDOM OF
CREATIVITY TO SHOWCASE THEIR AESTHETIC.** IF
YOU HAVE ANY SPECIFIC REQUIREMENTS KINDLY
CONTACT US.

CONTACT US

INFO@RAAHFOUNDATION.ORG

+919320019195

+919869423122

TABLEWARE



TISSUE BOX COVER

MATERIAL TYPE: COTTON

STYLE: WARLI PAINTING; HAND DYED

SIZES & PRICING

14" x 9" INR 600

COLOURS AND PATTERNS WILL VARY
ACCORDING TO MATERIAL AVAILABILITY. **WE
GIVE OUR ARTISANS THE FREEDOM OF
CREATIVITY TO SHOWCASE THEIR AESTHETIC.** IF
YOU HAVE ANY SPECIFIC REQUIREMENTS KINDLY
CONTACT US.

CONTACT US

INFO@RAAHFOUNDATION.ORG

+919320019185

+919869423122

YOUR ACCESSORIES



POUCHES

MATERIAL TYPE: COTTON
STYLE: PATCHWORK & QUILTED
SIZES & PRICING
8" x 6" INR 200-250



JUTE BAGS

MATERIAL TYPE: JUTE
STYLE: WARLI PAINTING
SIZES & PRICING
4" x 4" INR 60
14" x 6" x 12" INR 300
16" x 6" x 13.5" INR 400



GODHADI SACHEL

TEXTILE WASTE
MATERIAL TYPE: COTTON
STYLE: PATCHWORK
SIZES & PRICING
25" X 11" INR 600



PATCHWORK BAG

TEXTILE WASTE
MATERIAL TYPE: COTTON
STYLE: PATCHWORK
SIZES & PRICING
16" x 15" INR 300



COLOURS AND PATTERNS WILL VARY
ACCORDING TO MATERIAL AVAILABILITY. WE
GIVE OUR ARTISANS THE FREEDOM OF
CREATIVITY TO SHOWCASE THEIR AESTHETIC. IF
YOU HAVE ANY SPECIFIC REQUIREMENTS KINDLY
CONTACT US.

CONTACT US

INFO@RAAHFOUNDATION.ORG
+919320019195

YOUR ACCESSORIES

TOTE BAG WITH ZIP

MATERIAL TYPE: COTTON
STYLE: HANDMADE
SIZES & PRICING
16" x 15" INR 300



POTLIS

MATERIAL TYPE: BROCADE
STYLE: PATCHWORK, COTTON
SIZES & PRICING
8" x 6" INR 600

CONTACT US

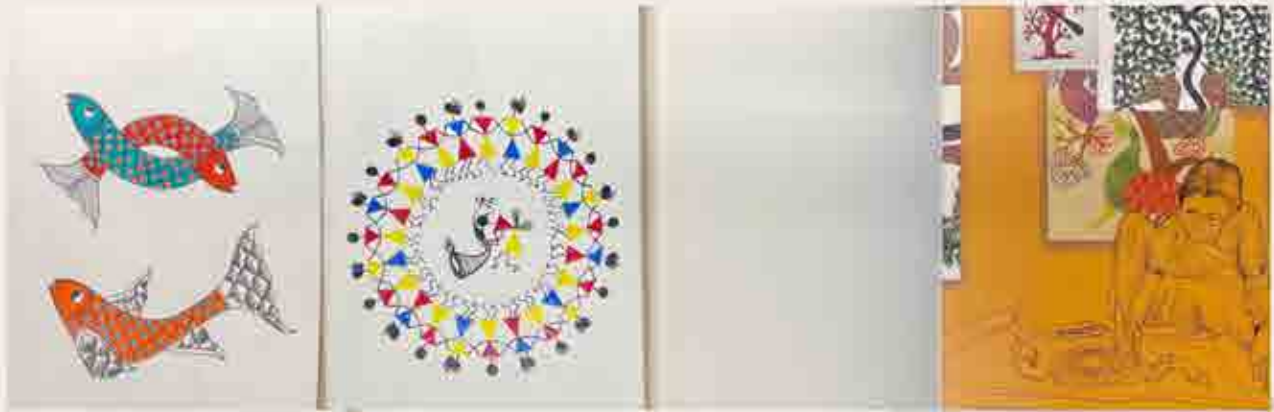
INFO@RAAHFOUNDATION.ORG
+919320019195
+919869423122

COLOURS AND PATTERNS WILL VARY
ACCORDING TO MATERIAL AVAILABILITY. WE
GIVE OUR ARTISANS THE FREEDOM OF
CREATIVITY TO SHOWCASE THEIR AESTHETIC. IF
YOU HAVE ANY SPECIFIC REQUIREMENTS KINDLY
CONTACT US.

POTLIS

MATERIAL TYPE: COTTON
STYLE: PATCHWORK, COTTON
SIZES & PRICING
8" x 6" INR 350

YOUR ACCESSORIES



BOOKS



COLOURS AND PATTERNS WILL VARY
ACCORDING TO MATERIAL AVAILABILITY. **WE
GIVE OUR ARTISANS THE FREEDOM OF
CREATIVITY TO SHOWCASE THEIR AESTHETIC.** IF
YOU HAVE ANY SPECIFIC REQUIREMENTS KINDLY
CONTACT US.



BOOKS

MATERIAL TYPE: PAPER
STYLE: HAND PAINTED
SIZES & PRICING
A5 60 pages INR 500

CONTACT US

INFO@RAAHFOUNDATION.ORG

+919320019195

+919869423122

APPAREL

BABY BLANKETS & STOLE



BABY QUILT

MATERIAL TYPE: PRINTED COTTON

STYLE: CUSTOM

SIZES & PRICING
44" x 50" INR 700 - INR 850

STOLE

MATERIAL TYPE: TEXTILE WASTE & COTTON

STYLE: PATCHWORK [CUSTOM AVAILABLE]

SIZES & PRICING
30" x 90" INR 1000

CUSTOMIZATIONS

COLOURS AND PATTERNS WILL VARY
ACCORDING TO MATERIAL AVAILABILITY. **WE
GIVE OUR ARTISANS THE FREEDOM OF
CREATIVITY TO SHOWCASE THEIR AESTHETIC.** IF
YOU HAVE ANY SPECIFIC REQUIREMENTS KINDLY
CONTACT US.

CONTACT US

INFO@RAAHFOUNDATION.ORG
+919320019195



GRASS WEAVE



BOATER HAT

Material : Sikki Grass
Dimension : 21" & 23"

Price INR 600



HOT PLATES

Material : Sikki Grass
Dimension : 10" [set of 2]

Price INR 500



STORAGE BOX

Material : Sikki Grass
Dimension : 8" x 4" x 4"

Price INR 700



COASTER

Material : Wood
Dimension : 4 " & 6" [set of 4]

Price INR 400

COME MAKE WITH US!



Help us give these hard working tribals a day off!

We promise you they are far more patient than your reporting officers!

Let them teach you a thing or two, let them tell you their stories and tales forgotten.



The human species will cease to exist without the nurture and nature of our women. Support us so we may support them.



Be a part of our community. Even the smallest initiatives count, let's take those first few baby steps towards a self sustaining future for everyone.



Let us help you reach your ISR [Individual Social Responsibility] goals whether they may be moral or ethical in nature.



CONTACT US

INFO@RAAHFOUNDATION.ORG

+919320019195

+919869423122

SUPPORT US

[HTTPS://WWW.RAAHFOUNDATION.ORG/PAYMENT.PHP](https://www.raahfoundation.org/payments.php)

COLLABORATIONS



GET YOUR WARLI ON

CHANDON INDIA LAUNCHED A #SAVEWARLI PROGRAM IN COLLABORATION WITH RAAH FOUNDATION, INTRODUCES LIMITED EDITION GIFT BOX

Chandon India and the art style of Warli share their roots in Nashik, Maharashtra. In 2011, Chandon India launched a #SAVEWARLI program in collaboration with Raah Foundation. The result:- the first of its kind Limited Edition Gift Box designed by a Warli artist.



TATA CAPITAL

For their big Diwali bash of 2023, Tata Capital collaborated with Raah Foundation to execute a massive order of 25,000 torans for gifting purposes.

The Raah Creations team of 152 women across 11 centres, across Maharashtra had the entire order ready and delivered in a little under 2 months. The women generated 12.5 Lakhs in revenue.

